

A 400 Tonne-per-Day PlascoEnergy Facility in Ottawa

The Proposed Facility

- 150,000 tonnes of residual waste processed per year (400 tonnes-per-day)
- 21 MW of net electricity for sale to Hydro Ottawa
- City to receive 25% of all revenues above the amount mutually agreed to by Plasco and the City
- The first commercial PlascoEnergy facility with the world's best environmental performance and highest energy recovery from waste conversion

What will the City of Ottawa Provide?

- Tipping fee of \$60/tonne escalated only for CPI for 20 years
- City owned site near existing City landfill
- No capital expenditures
- No operating expenditures

What is the Expected Timeline?

- Certificates of Approval from the Ontario Ministry of Environment and City building permits are estimated to take a maximum of 24 months (Sufficient data from the Plasco Trailroad Demonstration facility could reduce the timeline to as little as six months)
- Construction time of 18 months from receipt of required permit

What is the Environmental Performance?

- No emissions from the conversion of garbage to synthetic fuel gas, construction aggregate, salt, sulphur and clean water
- Heavy metals in the waste stream are recovered and sent for safe disposal (less than 2 Kg for each tonne of waste processed)
- Two tonnes of greenhouse gas reductions for each tonne of waste processed resulting from a combination of displacing coal-fired electricity and diverting waste from landfills where it would produce methane (a potent greenhouse gas)
- Electricity generation from engines running on the PlascoEnergy synthetic fuel gas is below the most stringent limits anywhere in the world

400 Tpd PlascoEnergy Facility Vs. Ontario and EU Regulations

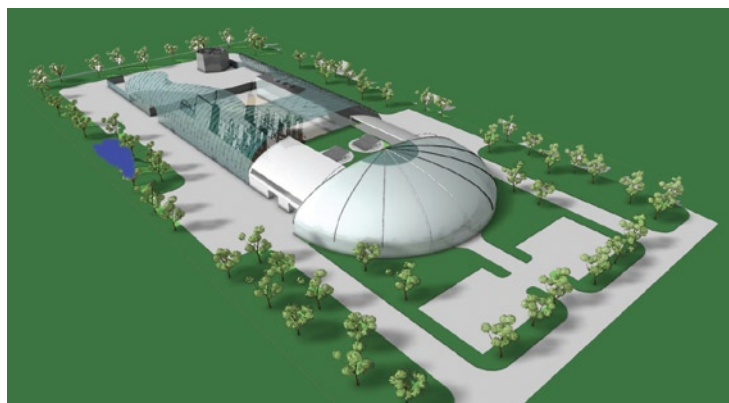
Parameter	Units	Ontario	Plasco Reg. O.Reg 254/06*	EU	PlascoEnergy
Total Dust	mg/m ³	17	12	9	3
Organic Matter	mg/m ³	66	49	9	9
Hydrogen Chloride (HCl)	mg/m ³	27	19	9	2
Hydrogen Fluoride (HF)	mg/m ³	-	-	0.9	0.02
Sulphur dioxide (SO ₂)	mg/m ³	55	37	46	10
Nitrogen oxides	mg/m ³	207	207	183	9
Carbon monoxide (CO)	mg/m ³	-	-	46	34
Mercury (Hg)	mg/m ³	0.020	0.020	0.046	0.0005
Cadmium (Cd)	mg/m ³	0.014	0.014	0.046	0.001
Lead	mg/m ³	0.142	0.142	-	0.012
Dioxins and furans	ng/m ³	0.080	0.040	0.9	0

Values are expressed at normal conditions (25°C and atmospheric pressure at 11 % oxygen)

* Specific Regulations from MOE for Plasco Trail Road Demonstration Facility



Plasco Trail Road Commercial Demonstration Facility



Example of a future PlascoEnergy facility. Design by Architect Douglas Cardinal